

FALCON® FLIGHTCASE EQUIPMENT



Adapted fixtures



FALCON® FLIGHTCASE for FALCON® FLOWER and FALCON® BEAM (3,000 W)

3,000 W

Custom-build for the 3,000 W lighting fixtures of FALCON® FLOWER and FALCON® BEAM.

Technical case specifications

- 1 Flightcase label
- 2 Integrated compartment for clamps and safetys
- 3 Retractable, counter-sunk handles for transportation
- 4 Two casters with brake



Dimensions

h: 156 cm | 61.4 inch
w: 80 cm | 31.5 inch
d: 81 cm | 31.9 inch

Weight (empty)

96 kg | 211.7 lb



Transport only upright. Keep vertical. Do not drop.

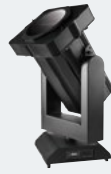
Front side

Right side

Back side

Left side

FALCON® FLIGHTCASE EQUIPMENT



Adapted fixtures



FALCON® FLIGHTCASE for FALCON® BEAM
(7,000 W)

7,000 W

Custom-built for the 7,000 W
lighting fixtures of FALCON® BEAM.

Technical case specifications

- 1 Integrated soft padded compartment for the xenon lamp



Dimensions

h: 158,5 cm | 62.4 inch
w: 107 cm | 42.1 inch
d: 120 cm | 47.2 inch

Weight (empty)

145 kg | 319.7 lb



Front side



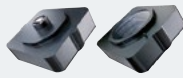
Left / right side



Back side

Transport only upright. Keep vertical. Do not drop.

FALCON® FLIGHTCASE EQUIPMENT



Adapted fixtures



FALCON® FLIGHTCASE FLOWER I BEAM
UNIVERSAL KIT (3,000 W)

BEAM I FLOWER UNIVERSAL KIT, 3,000 W

Custom-build for the UNIVERSAL
KIT of FALCON® FLOWER and
FALCON® BEAM 3,000 W.

Technical case specifications

- Case wall material: 9.5 mm PVC with hard foam plastic as lining material
- Aluminium square edges and steel ball corners, sixfold riveted
- 8 counter-sunk, spring mounted retractable handles
- 2 counter-sunk zinc-plated steel butterfly locks
- 4 casters, two casters with brake



Dimensions

h: 82 cm | 32.3 inch
w: 78 cm | 30.7 inch
d: 60 cm | 23.6 inch

Weight (empty)

54 kg | 119.1 lb



Transport only upright. Keep vertical. Do not drop.

Outer boxes: FLOWER UNIVERSAL and BEAM UNIVERSAL head; inner box in the middle with removable tripartite box: 2 reflectors and accessories/ tool kit

FALCON® FLIGHTCASE EQUIPMENT



Adapted fixtures



FALCON® FLIGHTCASE for FALCON® 4000 white

FALCON® FLIGHTCASE FALCON® 4000 white

Custom-build flightcase for the FALCON® 4000 white.

Technical case specifications

- Case wall material: 9.5 mm PVC with hard foam plastic as lining material
- Aluminium square edges and steel ball corners, sixfold riveted
- 8 counter-sunk, spring mounted retractable handles
- 2 counter-sunk zinc-plated steel butterfly locks
- 4 casters, two casters with brake



Dimensions

h: 142 cm | 55.9 inch
w: 81 cm | 31.9 inch
d: 81 cm | 31.9 inch

Weight (empty)

58.2 kg | 128.3 lb



Transport only upright. Keep vertical. Do not drop.

Arts Outdoor Lighting Technology GmbH & Co. KG ■ Arberger Hafendamm 22 ■ 28309 Bremen ■ Germany

■ Fon +49 (0) 421 59 66 09-0 ■ Fax +49 (0) 421 59 66 09-66

■ info@ao-technology.com ■ www.ao-technology.com

■ March 2018 All of the descriptions, illustrations, diagrams and technical details in this folder describe examples of design or construction and they do not form any element of the contract. Text and photographs are the copyright of Arts Outdoor Lighting Technology GmbH & Co. KG. All rights reserved. The right is reserved to make technical alterations.